

GF Machining Solutions



Learn and Earn

# Apprenticeship Program



# Earn While You Learn

Start your engineering career with GF Machining Solutions' Apprenticeship Program. Over a 3-year period and under the guidance of experienced mentors, our apprentices work in GF Machining Solutions' U.S. offices and in the field to contribute to our customers' success. A career with GF Machining Solutions awaits you upon successful completion of our Apprenticeship Program.

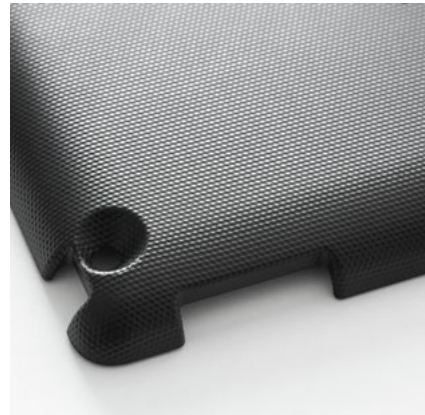


Photo courtesy of SRAM, LLC

## At a glance

GF Machining Solutions is a division of Switzerland-based Georg Fischer Corporation. GF Machining Solutions employs over 3,000 employees who generated sales of \$892 million in 2015 from 50 locations worldwide.

With production centers in Switzerland, Sweden, the United States, and China, sales companies worldwide, and a global network of Centers of Competence, GF Machining Solutions is committed to partnering with customers to provide customized solutions that enable them to excel and outpace their competitors.

## GF Machining Solutions U.S.

As part of the global GF Machining Solutions Group, the U.S. sales headquarters is located in Lincolnshire, Illinois. We employ 200 individuals, including over 90 field service and application engineers, who travel throughout the U.S., Canada, Mexico, and overseas.

For more information, please visit [www.gfms.com/us](http://www.gfms.com/us)

# The Apprenticeship Program



## About the program

Our 3-year paid Apprenticeship Program starts annually in the fall. During the first 3 years, you will alternate between class time and real world hands-on experience. Upon completion of the 3-year program you will receive nationally recognized certifications and then be required to fulfill an additional 2 year commitment.

## Our mentoring approach

At the beginning of the program the apprentice is assigned a mentor who follows and coaches the apprentice throughout the program. Our mentors have long term working experience inside GF Machining Solutions. They will help you become acquainted with our Division and our Company culture.

## A hands-on experience

The journey allows you to experience what it is like to work as a service engineer or application engineer within GF Machining Solutions. You will learn to install, service, refurbish, and test machine tools and their peripheral components. There will be further opportunities after successful completion of the program such as extensive travel and possible relocation.

## Program benefits

- + Zero college loan debt upon graduation
- + Salary and benefits for the duration of the program
- + Guidance of experienced mentors and educators
- + Gain skills and knowledge to succeed in your chosen career
- + Participation in a program that is supported by a leading global machine tool company
- + Earn nationally recognized credentials and accreditations including an Associates Degree



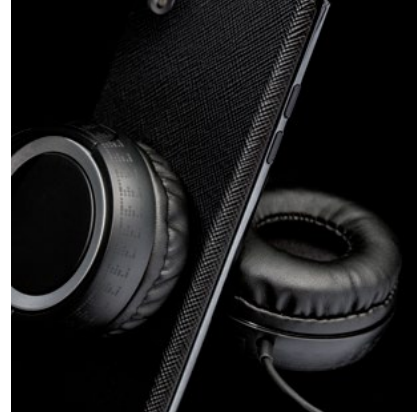
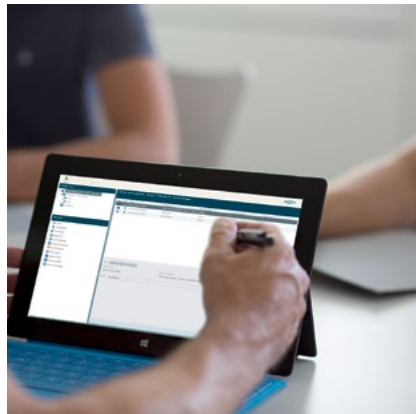
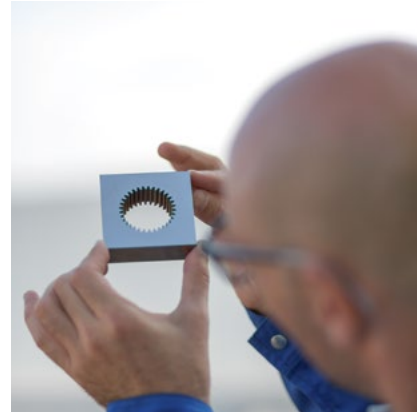
# Markets We Service

GF Machining Solutions is the partner of choice of successful Tool, Mold & Die makers in fast-growing market segments like electronic components, information & communication technology, and to producers of high-value parts for aerospace & power generation, the automotive industry, and many other industrial areas.

From prototyping to manufacturing structural parts, we have the best-in-class technologies, products, solutions, and services to drive customers' success. We offer superior performance, application expertise, flexibility and reliability.

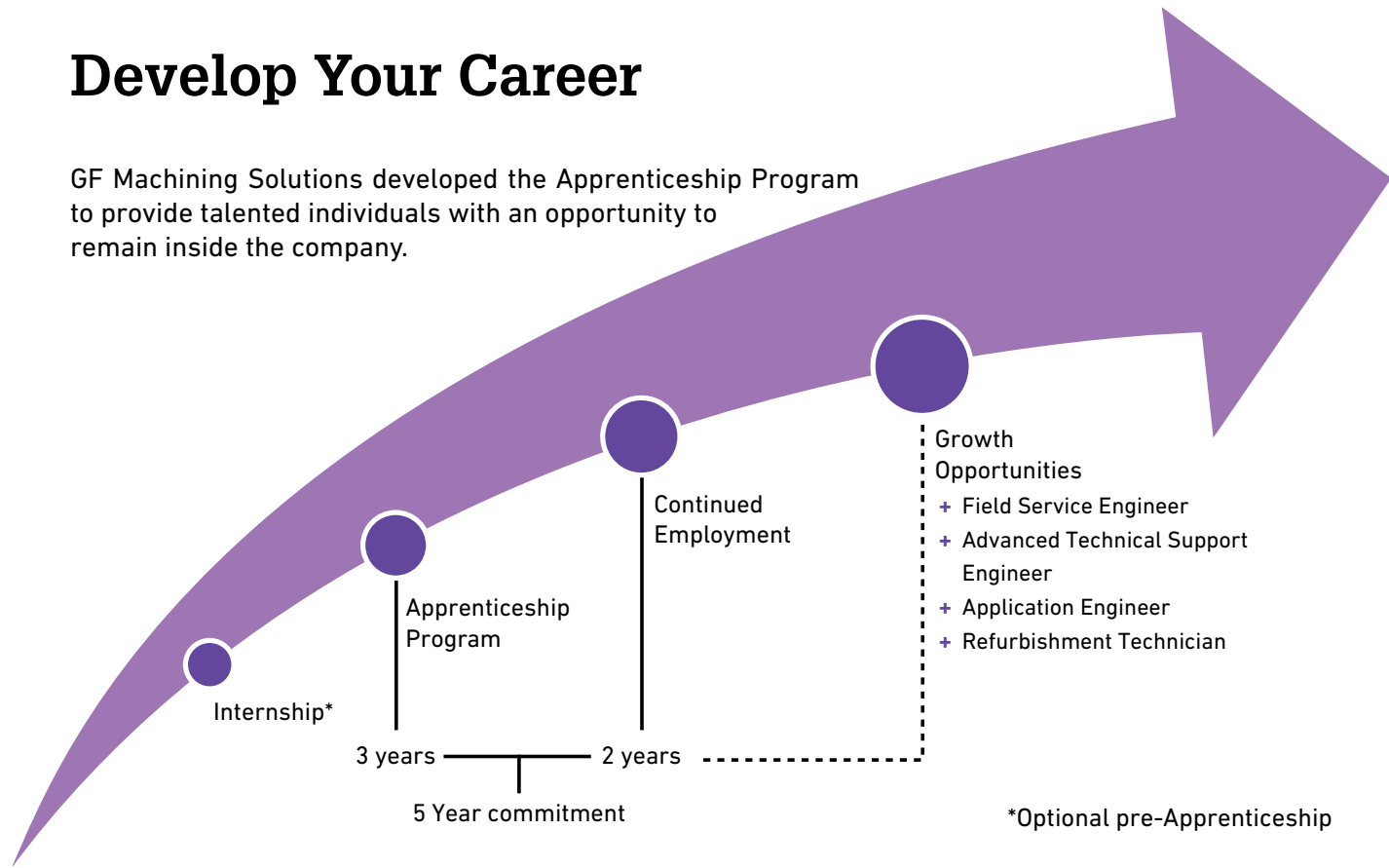
## Market Segments:

- + Aerospace & Power Generation
- + Medical & Dental
- + Mold & Die
- + Automotive
- + ICT (Information, Communication & Technology)
- + Electronic Components



# Develop Your Career

GF Machining Solutions developed the Apprenticeship Program to provide talented individuals with an opportunity to remain inside the company.



## Growth opportunities

### Field Service Engineer

You will work as part of the service team to coordinate activities relating to the installation and repair of machines and equipment, resolve technical problems with equipment, and eliminate future operational or service difficulties at the customer site or at a company facility.

### Application Engineer

You will provide customers with application support which entails quality technical support and training classes for dealers, customers and sales personnel. You will demonstrate GF Machining Solutions' products ability by performing test cuts that analyze the machines' performance.

### Advanced Technical Support Engineer

You will serve as a liaison between the field personnel and the factory regarding technical aspects to support customers, training and documentation needs.

### Refurbishment Technician

You will troubleshoot and perform necessary repairs and maintenance for refurbished machines and related equipment. You will ensure that the refurbished machines meet the original factory, quality and machining specifications.



Milling



Spindle



Wire Cut EDM



Die Sink EDM



Hole Drill EDM



Laser Texturing



Additive Manufacturing



Automation



Tooling



Customer Service

# Learn More...

- + **GF Machining Solutions** is looking for self-motivated individuals with the willingness to learn
- + You should be organized, have a positive attitude, and the ability to work a flexible schedule
- + You should be technically minded and interested in high-end precision machinery within the world of manufacturing
- + You should have a high school diploma or a GED prior to the beginning of the program

If you meet these criteria, see the following section for details on how to apply.

## How to apply

If you are interested in this opportunity, please send an e-mail to [employment\\_gfms.us@georgfischer.com](mailto:employment_gfms.us@georgfischer.com) along with your cover letter and resume.

## Recruitment process

1. Hiring event: Qualified candidates will be invited to an open house at our Lincolnshire office for a company presentation and to assess their motivation for the program.
2. Upon a successful evaluation there will be a face-to-face interview.
3. Candidates will be selected and notified.

We are an Affirmative Action / Equal Opportunity Employer  
Minority/Female/Disability/Veteran





# Your contact

**GF Machining Solutions LLC**

560 Bond Street  
Lincolnshire, IL 60069  
USA

Phone: 847.913.5300

Email: [employment\\_gfms.us@georgfischer.com](mailto:employment_gfms.us@georgfischer.com)

Website: [www.gfms.com/us/education](http://www.gfms.com/us/education)

