

System 3R

JTM – JobToolManager



Swedish design and quality

Pallet Management software

User friendly software for one machine with integrated pallet changer.

Assign NC programs to pallet position by drag and drop on a touch screen, close to the pallet changer



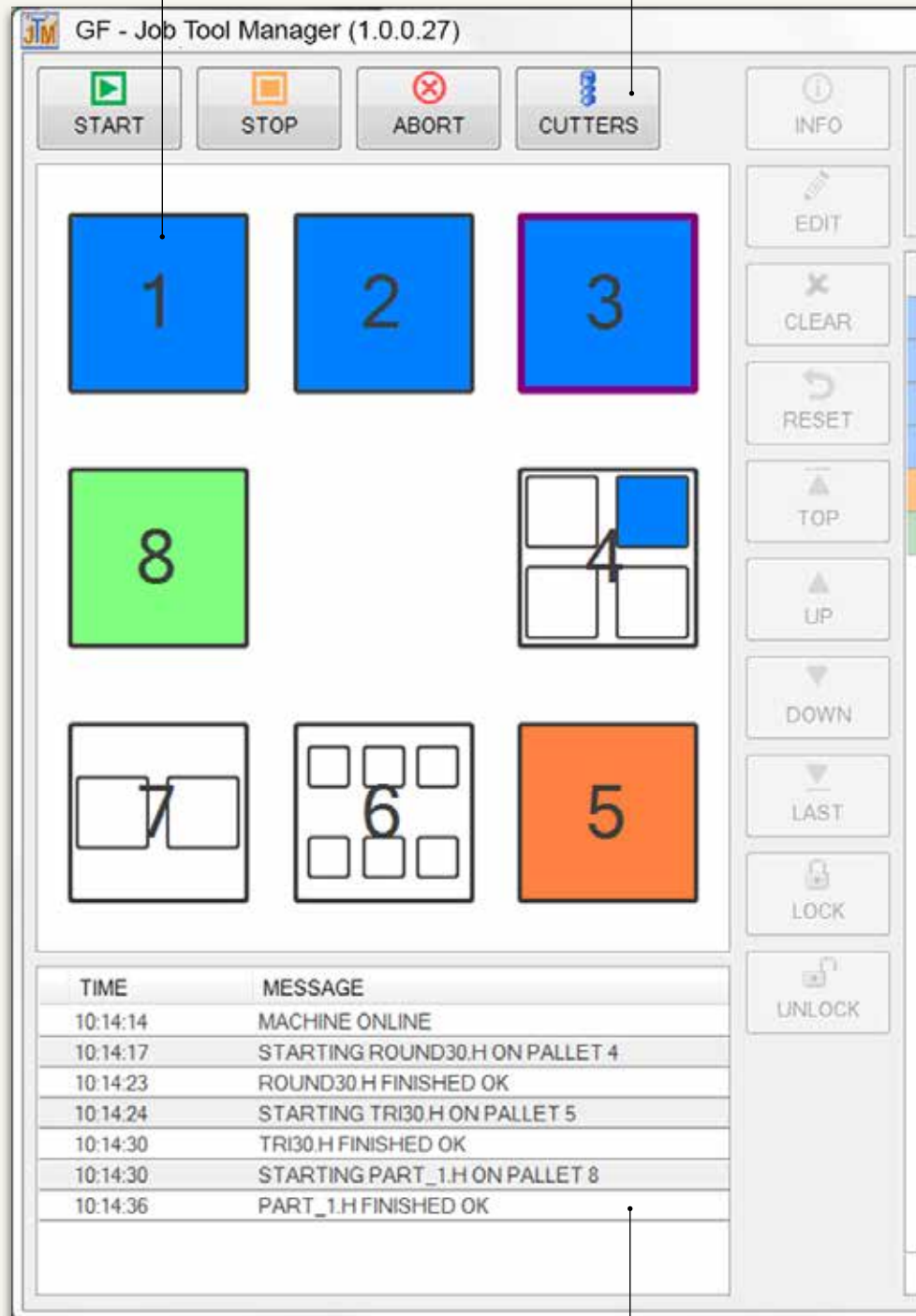
Advantages

- + Easy to change priorities when the machine is working
- + Add or remove jobs while machining
- + Jobs where cutters are missing will not be started
- + Estimated and present machining time for the magazine content are calculated.

User friendly

Magazine display
Any type of pallet can be created, single position and multiple positions

Machine tool table
Displays the tool table of the machine



Message / Info / NC display window
Toggle function to view various informations

Magazine display

Any type of pallet can be created, single position and multiple positions

Machine tool table

Displays the tool table of the machine

NC	MAG POS	TIME	STATUS
			ONLINE
			IDLE
			STOPPED

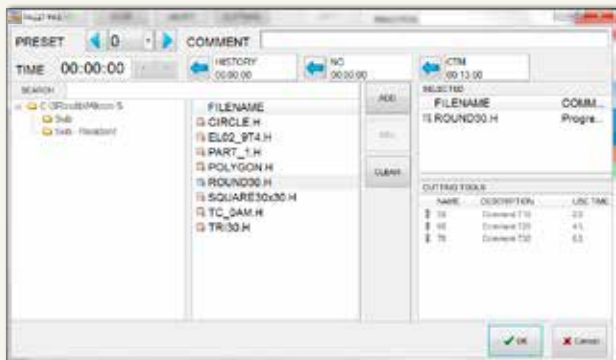
MP	NC PROGRAM	TIME	PP
3	PART_1.H	00:00:00	0
2	SQUARE30x30	00:00:00	0
1	PART_1.H	00:00:00	0
4.2	PART_1.H	00:00:00	0
5	PART_1.H	00:00:00	0
8	PART_1.H	00:00:05	0

↑ 00:00:05 Σ 00:00:05 ↓ 00:00:00

Time display

Displays present job time, remaining job time and total job time

Workflow



Assignment of NC file and preset point

By selecting the NC program, JobToolManager registers the tools used in the program.

Time is stored if the NC program defines the time for the entire machining or if each tool has its use time.

If the program has been used earlier, it automatically displays the last recorded time.

NO.	DESCRIPTION	SEL.	POC.	LOC.	LIFE MO.	LIFE TL.	SWAPN.	CURRE.	TIME S.	LEN.	IND.
10		1	1	NO	YES	40.0	14.0	0.0	40.0	0.0000	0.0000
20		2	2	NO	YES	80.0	14.0	0.0	80.0	0.0000	0.0000
30		3	3	NO	YES	40.0	14.0	0.0	40.0	0.0000	0.0000
40		4	4	NO	YES	80.0	14.0	0.0	80.0	0.0000	0.0000
50		5	5	NO	YES	80.0	14.0	0.0	80.0	0.0000	0.0000
60		6	6	NO	YES	80.0	14.0	0.0	80.0	0.0000	0.0000
70		7	7	NO	YES	40.0	14.0	0.0	40.0	0.0000	0.0000
80		8	8	NO	YES	80.0	14.0	0.0	80.0	0.0000	0.0000
90		9	9	NO	YES	40.0	14.0	0.0	40.0	0.0000	0.0000
100		10	10	NO	YES	100.0	270.0	144.0	100.0	0.0000	0.0000
110		11	11	NO	YES	80.0	14.0	0.0	80.0	0.0000	0.0000
120		12	12	NO	YES	80.0	14.0	0.0	80.0	0.0000	0.0000
130		13	13	NO	YES	80.0	14.0	0.0	80.0	0.0000	0.0000
140		14	14	NO	YES	80.0	14.0	0.0	80.0	0.0000	0.0000
150		15	15	NO	YES	40.0	14.0	0.0	40.0	0.0000	0.0000
160		16	16	NO	YES	80.0	14.0	0.0	80.0	0.0000	0.0000
170		17	17	NO	YES	80.0	14.0	0.0	80.0	0.0000	0.0000
180		18	18	NO	YES	80.0	14.0	0.0	80.0	0.0000	0.0000

Machine tool table

Each time a new job is started, JobToolManager checks the machine tool table to see the availability of tools.

If a tool is broken and no sister tool is available, will the job be blocked.

NO.	CODE	LIFE
40	9	270.0
80	2	134.0
20	2	7.0
30	2	11.0
60	1	4.0
90	1	6.0

Tools used in jobs

This list displays the tools used in the jobs and it also displays tools that are missing and in which tool magazine position it must be placed in.

GF Machining Solutions



Milling

High-Speed and High-Performance Milling Centers. In terms of cutting speed, HSM centers are 10 times faster than conventional milling machines. Greater accuracy and a better surface finish are also achieved. This means that even tempered materials can be machined to a condition where they are largely ready to use. One essential advantage of HSM is that with systematic integration, the process chain can be significantly shortened. HSM has developed alongside EDM into one of the key technologies in mold and tool making.



EDM

Electric Discharge Machines. EDM can be used to machine conductive materials of any hardness (for example steel or titanium) to an accuracy of up to one-thousandth of a millimeter with no mechanical action. By virtue of these properties, EDM is one of the key technologies in mold and tool making. There are two distinct processes — wire-cutting EDM and die-sinking EDM.



Laser

Laser texturing. Laser texturing supplements and extends the technologies offered by GF Machining Solutions. With our laser technology we enable you to produce texturizing, engraving, microstructuring, marking and labeling of 2D geometries right through to complex 3D geometries. Laser texturing, compared to conventional surface treatment using manual etching processes, offers economic, ecological and design advantages.



Automation

Tooling, Automation, Software. Tooling for fixing workpieces and tools; automation systems and system software for configuring machine tools and recording and exchanging data with the various system components and design advantages.



Customer Services

Operations, Machine and Business Support. Customer Services provides with three levels of support all kind of services for GF Machining Solutions machines. Operations Support offers the complete range of original wear parts and certified consumables including wires, filters, electrodes, resin and many other materials. Machine Support contains all services connected with spare parts, technical support and preventive services. Business Support offers business solutions tailored to the customer's specific needs.

At a glance

We enable our customers to run their businesses efficiently and effectively by offering innovative Milling, EDM, Laser and Automation solutions. A comprehensive package of Customer Services completes our proposition.

www.gfms.com

