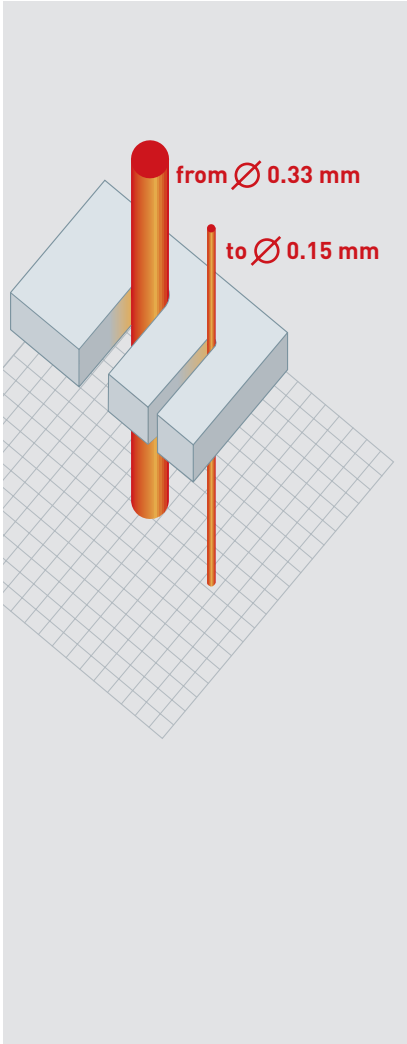




AC Classic V

AC Classic V At a glance

The machine for economic EDM wire cutting



Small wire 0.07 mm

With an extension kit, wires down to 0.07 mm can be used. All AC Classic V machines are designed for wires with 0.15 mm as the smallest diameter as standard.

Easy technology selection according accuracy or speed criteria

With a few data inputs, the best possible technology is generated individually for every machining job and workpiece height.

Choice of Technology: Machining

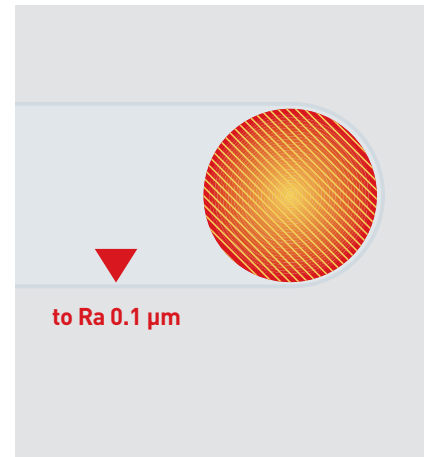
Requested Technology: Quality Target Ra/Rz 0.30 Tf 1.00 Thk 1.00 Nozzle Touching Lowered Wire Berco Cut 0.25

Proposed Technologies:

	Name	Ra/Rz	Tf	Thk	Speed
Recommended	T1001(4)	0.35	7.80	1.60	2.382
Variant: Ra/Rz	T1021(5)	0.15	7.80	1.60	1.784
	T1031(5)	0.20	7.80	1.60	1.784
	T1041(3)	0.80	11.10	1.90	3.647
	T1051(2)	1.50	11.10	1.90	5.792
	Further refinement				
Variant: Tf/Thk	T1001(4)	0.35	7.80	1.60	2.382
	T1001(4)	0.35	7.80	1.60	2.382
	T1001(4)	0.35	7.80	1.60	2.382
	T1001(4)	0.35	7.80	1.60	2.382

Show

Ok Cancel Stop

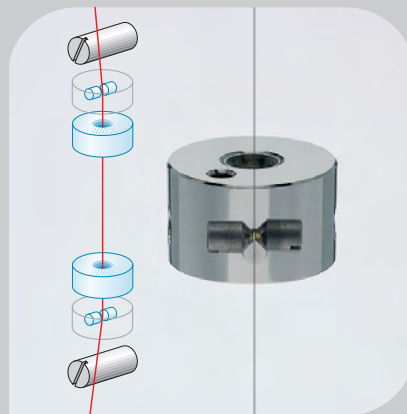
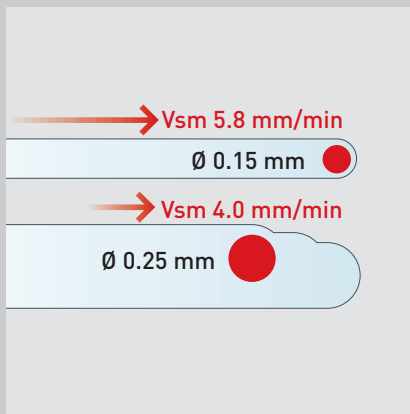


High quality surface finish

A surface quality of Ra 0.2 µm is achieved as standard with all AC Classic V machines. The SF module option makes it possible to have roughness down to less than Ra 0.1 µm.



Technical Data		AC Classic V2	AC Classic V3
Dimensions (L x W x H)	mm in	1640 x 2040 x 2220 64.56x80.31x87.4	1940 x 2300 x 2600 76.37x90.55x102.36
Total weight (without dielectric)	kg lb	2680 5908.39	3460 7627.99
X, Y, Z axes travels	mm in	350 x 250 x 256 13.77x9.84x10	500 x 350 x 426 19.7x13.77x16.8
U, V axes travels	mm in	± 70 2.75	± 70 2.75
Taper angle/height	degree/mm in	± 30°/100 ±30°/3.93	± 30°/100 ±30°/3.93
Workpiece dimensions (L x W x H)	mm in	750 x 550 x 250 29.5x21.6x9.8	1050 x 650 x 420 41.3x25.6x16.5
Max. workpiece weight (with/without bath)	kg lb	200/450 440/992.08	400/800 880/1763.70
Volume of dielectric	l us gal	750 199	1000 264
Available wire diameters	mm in	0.15 – 0.33 0.0059-0.0129	0.15 – 0.33 0.0059-0.0129
Best surface finish Ra with SF Module	µm µin	0.1 4	0.1 4



Low running cost

Low consumption of consumables and very high lifetime of wear parts such as wire guide and power contact.

High quality main cut

With individually generated technologies, precision full cuts can be carried out which, according to the precision and surface quality required, can reduce the number of trim cuts or even allow them to be completely eliminated.

High accuracy also on stepped workpiece

With Variocut, stepped workpieces or workpieces with openings can be cut at optimum speed as the cut cross section is continuously recorded and the power is automatically adjusted to the changed conditions.



AC Classic V

With the AgiePlanning function, all AC Classic V machines have a standard instrument at their disposal for job planning.

At a glance

GF AgieCharmilles

We enable our customers to run their businesses efficiently and effectively by offering innovative Milling, EDM and Automation solutions. A comprehensive package of Customer Services completes our proposition.

Achieve more

We commit to a promise. That promise is "Achieve more." It's a commitment to create the right conditions for our customers to obtain competitive results. When our customers win, we win.

www.gfac.com



AgieCharmilles

Achieve more...