

CUT 20 P
CUT 30 P

CUT 20 P / 30 P At a glance

The solution for standard parts and general engineering



Simple to use user interface with embedded CAD/CAM

The simple and functional user interface facilitates direct and intuitive dialogue. The input of data takes place in a structured manner with pictures and symbols guiding even inexperienced operators to fast effective results.



Strategy for stepped work pieces

The Generator can manage and erode stepped work pieces. This function detects the difference of the material thickness in order to adapt automatically the power to the changing conditions.



IPG-V Generator

It integrates a SF (Fine Surface) module with which a surfaces roughness of less than $Ra\ 0.25\ \mu m$ can be achieved. The generator, completely antielectrolysis, assures an homogenous and perfect surface finish. Along with the performance, the up-to-date electronics used in manufacturing ensure that the cost of ownership is the lowest possible.

Corner strategy

To ensure accuracy of:

- sharp angles
- small radii

the corner strategies adjust automatically the machining parameters during changes of direction. Even on the smallest details, high geometrical accuracy is obtained.





Technical Data		CUT 20 P	CUT 30 P
X, Y, Z axes	mm	350 x 250 x 250	600 x 400 x 350
	in	13.78 x 9.84 x 9.84	23.60 x 15.70 x 13.78
Taper angle	°/mm (in)	± 25/80 (3.5)	± 25/80 (3.5)
Max. workpiece dimensions	mm	900 x 680 x 250	1050 x 800 x 350
	in	33.43 x 26.77 x 9.84	41.3 x 31.50 x 13.78
Minimum surface roughness Ra	µm (µin)	< 0.25 (< 10)	< 0.25 (< 10)
Measuring system/resolution	µm (µin)	Linear glass scales/0.1 (4)	Linear glass scales/0.1 (4)
Wire diameters	mm (in)	0.15 – 0.30 (0.006 – 0.012)	0.15 – 0.30 (0.006 – 0.012)
Main Options		–	Big spool 25 kg



Integrated Collision Protection

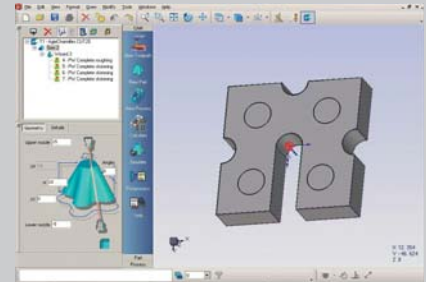
The Z-Axis of CUT 20 P/30 P is equipped with Collision Protection. The ICP system prevents any breakage of sensitive parts and costly elements allowing the operator to work with more confidence during job preparation and execution.



High running hours

A large spool option is available on the CUT 30 P. A spool of 25 kg extends running hours and allows continuous production in combination with:

- Deionising bottle with a volume of 20 l (5.3 gal)
- 2 filter cartridges of 450 mm height x 340 mm diameter each (17.71 x 13.38 in)



AC Easy Cam

The operator can easily prepare an ISO file during the machine production with an onboard CAM system. This powerful feature is standard and renders this product as a complete solution from the contour creation to the part production.

Data transfer:

- DXF import & export
- ISO export for CUT 20 P/30 P
- Possibility to import additional NC code

CUT 20 P CUT 30 P

A complete solution ready to perform

At a glance

Achieve more

We commit to a promise.
That promise is "Achieve more".
It's a commitment to create the
right conditions for our customers
to obtain competitive results.
When our customers win, we win.

GF AgieCharmilles

We enable our customers to run their
businesses efficiently and effectively
by offering innovative Milling, EDM and
Automation solutions. A comprehensive
package of Customer Services
completes our proposition.

www.gfac.com

© Agie Charmilles SA, 2009
The technical data and illustrations are not binding.
They are not warranted characteristics and are
subject to change.

+GF+

AgieCharmilles

Achieve more...