

Liechti

# go-Mill 350

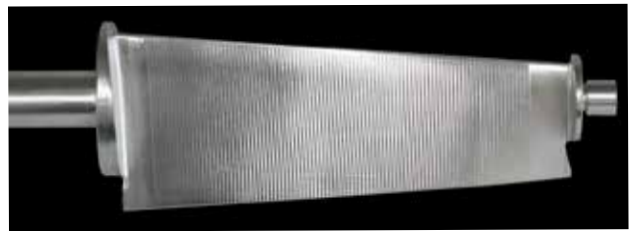
go EASY, complex parts EASY machining

For dynamic machining of blisk,  
impeller and single blades



go-Mill 350

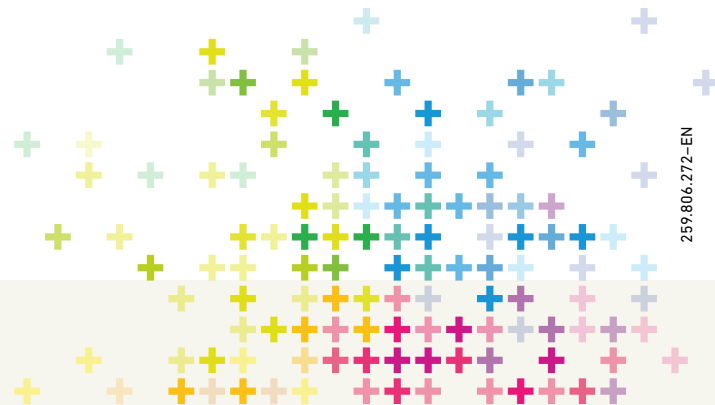
# The compact airfoil machining solution



Now available with 1000 rpm turning capability.

Designed for the production of airfoils with 5-axis simultaneous machining technology.  
Double end rotary drive option for challenging airfoil machining applications.

Turn key solutions from one single source. Extensive machining experience and CAM programming expertise is available at LIECHTI – a Team of specialists in the production of airfoils.



259.806.272-EN

## Technical data\*

## go-Mill 350

Blade length max. (incl. fixture)	350 mm (13.8")
Blade swing dia. max.	350 mm (13.8")
Spindle (S6)	20000 rpm, 120 Nm, 36 kW, HSK-A63
Pivot Table	Double end rotary configuration (1000 rpm turning capability)
Tool changer	30 or 60 positions, HSK-A63
Automation	16 position part changer
Quality inspection	Work and tool measuring
CAM	Liechti Turbosoft plus
Foot print	6.4 x 4.3 m (20.9 x 14.1 ft)

\*subject to change

GF Machining Solutions AG  
LIECHTI Engineering  
CH-3550 Langnau, Switzerland  
www.liechti.com

