

System 3R

# WorkPartner 1+



# Becoming better every day – since 1802

## GF Machining Solutions

GF Machining Solutions is one of the world's leading providers of advanced manufacturing systems for the production of high accuracy components and tools. Thousands of customers rely on our cuttingedge technologies including Electrical Discharge Machining (EDM), high-speed Milling, five-axis Laser Micromachining, and Additive Manufacturing. Our product portfolio also includes Spindles, Automation, high-precision Tooling, Digital Solutions and unrivaled Customer Services. In line with our targets and vision, the focus of GF Machining Solutions is to provide global customers with innovative, energy-efficient, sustainable, end-to-end production technologies for the most demanding applications.



+ We are System 3R.  
We are GF Machining Solutions.

# Contents

4	Modular Automation
10	Options
11	Technical specifications
13	AMR integration
14	WSM 5 – WorkShopManager 5

## Partnering your production

- Can serve one or two machines in a production cell.
- One, two or three magazine capability gives exceptionally flexible capacity.
- Large doors facilitate loading of workpieces and tools into the magazines.
- Integrated pneumatic control of gripping devices and table chucks.
- Minimal floor space requirements.

**Achieve greater return on your investment!**

## Customer-specific Solutions

# Modularly adapted to your needs

### Milling application

WorkPartner 1+ (LH Version)  
Large magazine capacity  
Two types of tooling  
Heavy loading station



### Mixed technologies Milling and EDM

WorkPartner 1+ (LH Version)  
Large magazine capacity  
Two types of tooling  
Heavy loading station  
Drain station



### Wire-cutting EDM (wireEDM) application

WorkPartner 1+ (HH Version)  
Heavy loading station



### Laser application

WorkPartner 1+ (LL Version)

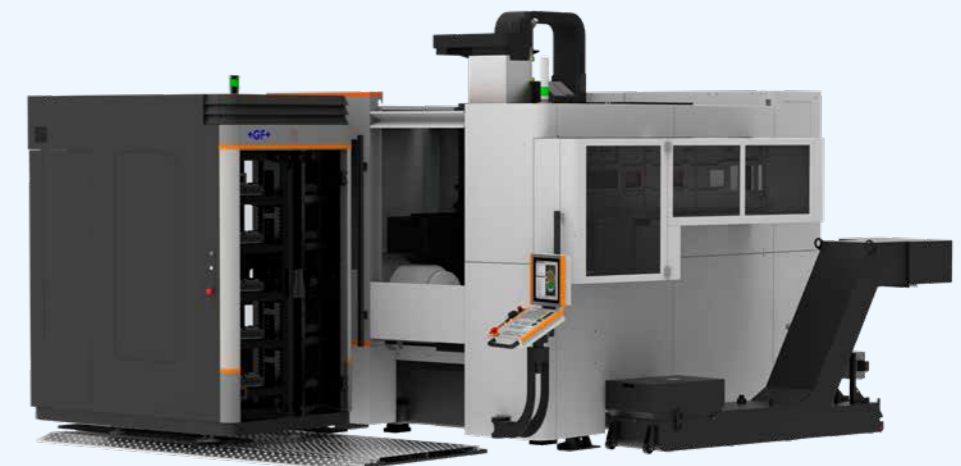
### EDM application

WorkPartner 1+ (LH Version)  
Heavy loading station  
Drain station



### Rail application for front loaded milling machines

WorkPartner 1+ (HH Version)  
Heavy loading station



# Choose between 12 modular models

WorkPartner 1+ offers maximum magazine capacity in minimum floor space. Unlike many other solutions on the market, there is no risk of "painting yourself into a corner". Our modular magazines give an unprecedented flexibility that can be adapted to each user's needs. If you start with a single magazine, one or two more can be added whenever required.

WorkPartner 1+ is equally ideal for milling machines, die-sinking, wire EDM machines, laser machines and grinding machines. Similarly, it is equally efficient whether used in one-off or series production.

With generous magazine doors that facilitate loading/unloading, WorkPartner 1+ is extremely user friendly. Other advantages include rapid change cycles, integrated pneumatic control of gripping devices and table chucks and minimal floor space requirements.

## 4 different build in components



Manipulator unit



Light magazine



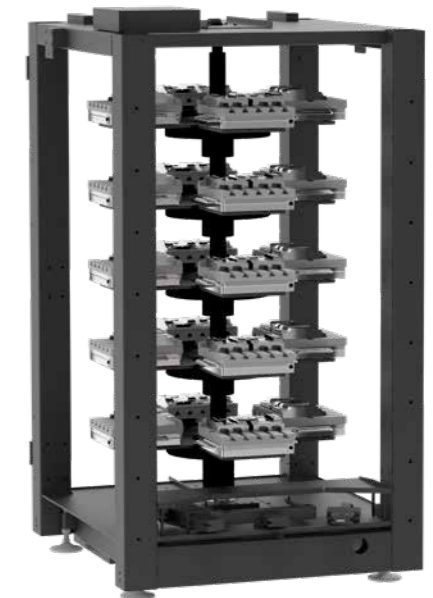
WorkPartner 1+ with covers



WorkPartner 1+ without covers



Heavy magazine



Rotary magazine

## WorkPartner 1+ with different configurations



### Two magazines example

- Two light magazines  
16 levels with 10 pallets/level

### Summary

160 Macro 54 pallets



### Two magazines example

- One light magazine  
8 levels with 10 pallets/level
- One Heavy magazine  
5 levels with 2 pallets/level

### Summary

80 Macro 54 pallets  
10 Dynafix 350 pallets



### Two magazines example

- One light magazine  
8 levels with 10 pallets/level
- One rotary magazine  
2 levels with 36 pallets/level  
3 levels with 4 pallets/level

### Summary

152 Macro 54 pallets  
12 Dynafix 350 pallets



### One magazine example

- One rotary magazine  
2 levels with 36 pallets/level  
3 levels with 4 pallets/level

### Summary

72 Macro 54 pallets  
12 Dynafix 350 pallets



### Two magazines example

- Two heavy magazines  
10 levels with 2 pallets/level

### Summary

20 Dynafix 350 pallets



### Three magazines example

- One light magazine  
8 levels with 10 pallets/level
- Two heavy magazines  
10 levels and 2 pallets/level

### Summary

80 Macro 54 pallets  
20 Dynafix 350 pallets



### One magazine example

- One light magazines  
8 levels with 10 pallets/level

### Summary

80 Macro 54 pallets



### Two magazines example

- One rotary magazine  
2 levels with 36 pallets/level  
3 levels with 4 pallets/level
- One Heavy magazine  
5 levels with 2 pallets/level

### Summary

72 Macro 54 pallets  
22 Dynafix 350 pallets



### One magazine example

- One heavy magazine  
5 levels with 2 pallets/level

### Summary

10 Dynafix 350 pallets



### Three magazines example

- Three light magazines  
24 levels with 10 pallets/level

### Summary

240 Macro 54 pallets



### Three magazines example

- Three heavy magazines  
15 levels with 2 pallets/level

### Summary

30 Dynafix 350 pallets

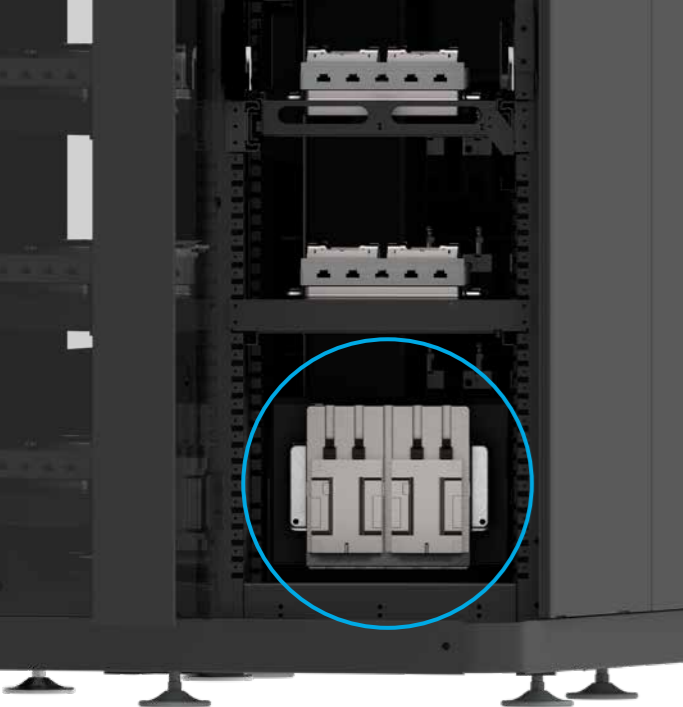


### Three magazines example

- Two light magazines  
16 levels with 10 pallets/level
- One heavy magazine  
5 levels and 2 pallets/level

### Summary

160 Macro 54 pallets  
10 Dynafix 350 pallets



**Drain station**

For emptying fluids from workpieces.



**Cell PC**

WorkPartner 1+ equipped with a Cell PC.

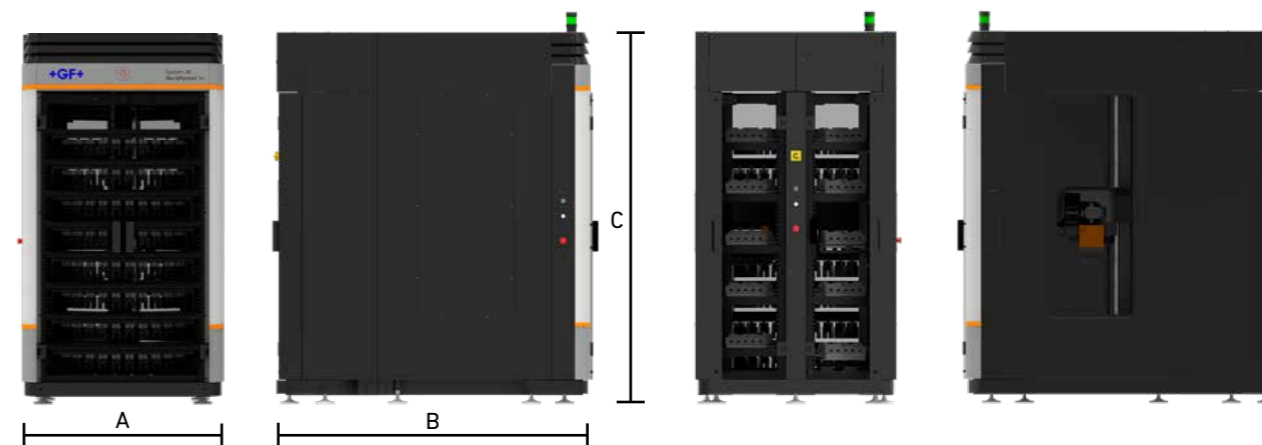
# Options



**Load station**

Equipped with a sliding shelf for easy loading.  
10 mm security glass in the door.

## Technical specifications



Configuration	Foot print
One light magazine	A = 1310, B = 1646, C = 2460 mm (A = 52, B = 65, C = 97 in)
One heavy magazine	A = 1310, B = 2043, C = 2460 mm (A = 52, B = 81, C = 97 in)
One rotary magazine	A = 1310, B = 2647, C = 2460 mm (A = 52, B = 104, C = 97 in)
Two light magazines	A = 1310, B = 1646, C = 2460 mm (A = 52, B = 65, C = 97 in)
Two heavy magazines	A = 1310, B = 2440, C = 2460 mm (A = 52, B = 96, C = 97 in)
One light and one heavy magazine	A = 1310, B = 2043, C = 2460 mm (A = 52, B = 81, C = 97 in)
One light and one rotary magazine	A = 1310, B = 2647, C = 2460 mm (A = 52, B = 104, C = 97 in)
One heavy and one rotary magazine	A = 1310, B = 3044, C = 2460 mm (A = 52, B = 120, C = 97 in)
One light and two heavy magazines	A = 1961, B = 2043, C = 2460 mm (A = 77, B = 81, C = 97 in)
Three light magazines	A = 1564, B = 1646, C = 2460 mm (A = 62, B = 65, C = 97 in)
Three heavy magazines	A = 1961, B = 2440, C = 2460 mm (A = 77, B = 96, C = 97 in)
Two light and one heavy magazine	A = 1564, B = 2043, C = 2460 mm (A = 62, B = 81, C = 97 in)

Specifications	
Transfer weight	Up to 100 kg (220 lbs.) Includes pallet with workpiece
Max. X-reach	1244 mm (49 in). Two magazine version
Max. Z-reach	1500 mm (59 in)
Max. C-rotation	330 °
Required air pressure	6 ± 1 bar, 150 litres/minute
Power supply (Japan)	3x200 VAC
Power supply (North America)	3x480 VAC
Power supply (Europe)	3x400 VAC
Power consumption	Max 20A@3x200 VAC or 20A@3x400VAC
Frequency	50/60 Hz ± 1%
External fuse	20 Ampere, characteristic type D
Interface	RS-232, 24 V I/O (Various) Industrial Field Buses
Double emergency stop	✓

Options and accessories	
Load station	✓
Drain station	✓
ID-system with or without automatic scanning	✓
Internal magazine lighting (LED)	✓
Cell PC with WSM software	✓
Customized color for outer covers	✓
Manual rail	✓

### Magazine capacity

There are three types of magazine, light (L), heavy (H) and rotary (R).

Up to three magazines can be connected to the changer unit in any combination whatsoever.

One magazine: L, H or R

Two magazines: L + L, H + H, L + H, H + R or L + R.

Three magazines: LHH, LLL, HHH and LHL

**Note:** Each individual magazine is intended for one and the same pallet system.

The magazine's capacity is determined entirely by the shape and size of the workpieces. The tables below show only "guideline values" for each pallet system carrying workpieces of a "standard" size and shape.

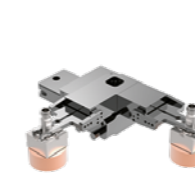
Pallet systems in the LIGHT magazine	No of levels	No of pallets/level	Total
Macro 50/70	8	10	80
Macro PT (70x70)	8	10	80
Macro 116	8	6	48
Macro chip guard	8	6	48
Matrix 110	8	6	48
Matrix 142	8	5	25
MacroMagnum 156	8	5	25
GPS 70	8	10	80
GPS 120	8	6	48
ITS50	8	10	80
ITS72	8	9	72
ITS115	8	6	48
ITS148	8	5	25

Pallet systems in the HEAVY magazine	No of levels	No of pallets/level	Total
Macro Magnum 156	5	4	20
Matrix 110	5	4	20
Matrix 142	5	4	20
GPS 240	5	2	10
Dynafix 280/350	5	2	10
Delphin Short (Fork/levelling head)	5	2	10
ITS148	5	4	20
UPC Fork/RCS	5	2	10

Pallet systems in the Rotary magazine	No of levels	No of pallets/level	Total
Macro 54	7	36	252
Macro 70	7	30	210
Macro 116	5	12	60
Matrix 110	5	12	60
Matrix 142	5	12	60
MacroMagnum 156	5	12	60
GPS 70	7	20	140
GPS 120	5	12	60
GPS 240	5	6	30
Dynafix 280	5	5	25
Delphin Short (Fork/levelling head)	5	5	20
ITS50	7	36	252
ITS148	5	12	60
UPC Fork/RCS	5	4	20

**Note:** When carrying out wire EDM with Macro, MacroTwin or Unimatic, solutions are customer specific – the number of positions per rack is entirely determined by the nature of the devices securing the workpiece and not by the pallet system.

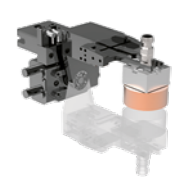
### Optional grippers



Double

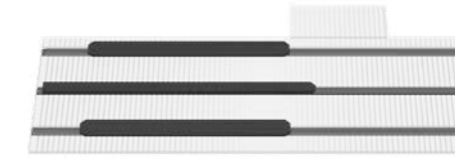


Tilting



Turning

### Option



Manual rail – slide away Workpartner 1+ for manual operation of front-loaded machines.

## WorkPartner 1+ with AMR integration

### Single cell

WorkPartner 1+ with EDM machine in integration with AMR unit.

AMR with tray and lifter at a loading/unloading station at one of the machine's sides (where one machining centre only).

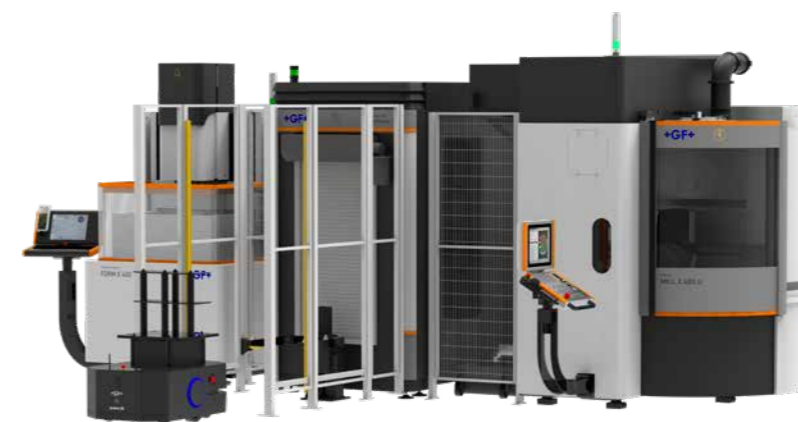


### Double cell

WorkPartner 1+ with Milling and EDM machine in integration with AMR unit.

AMR with tray and lifter at loading/unloading station that has an automatic door on its magazine.

There will be an option available on the WPT1+ Light magazine for AMR support to have access to load/unload the tray on the lifter when using one or two machines. The robotarm will move out through the light magazine. The number of tooling positions in the light magazine will be limited, due to this access (support coming beginning 2025).

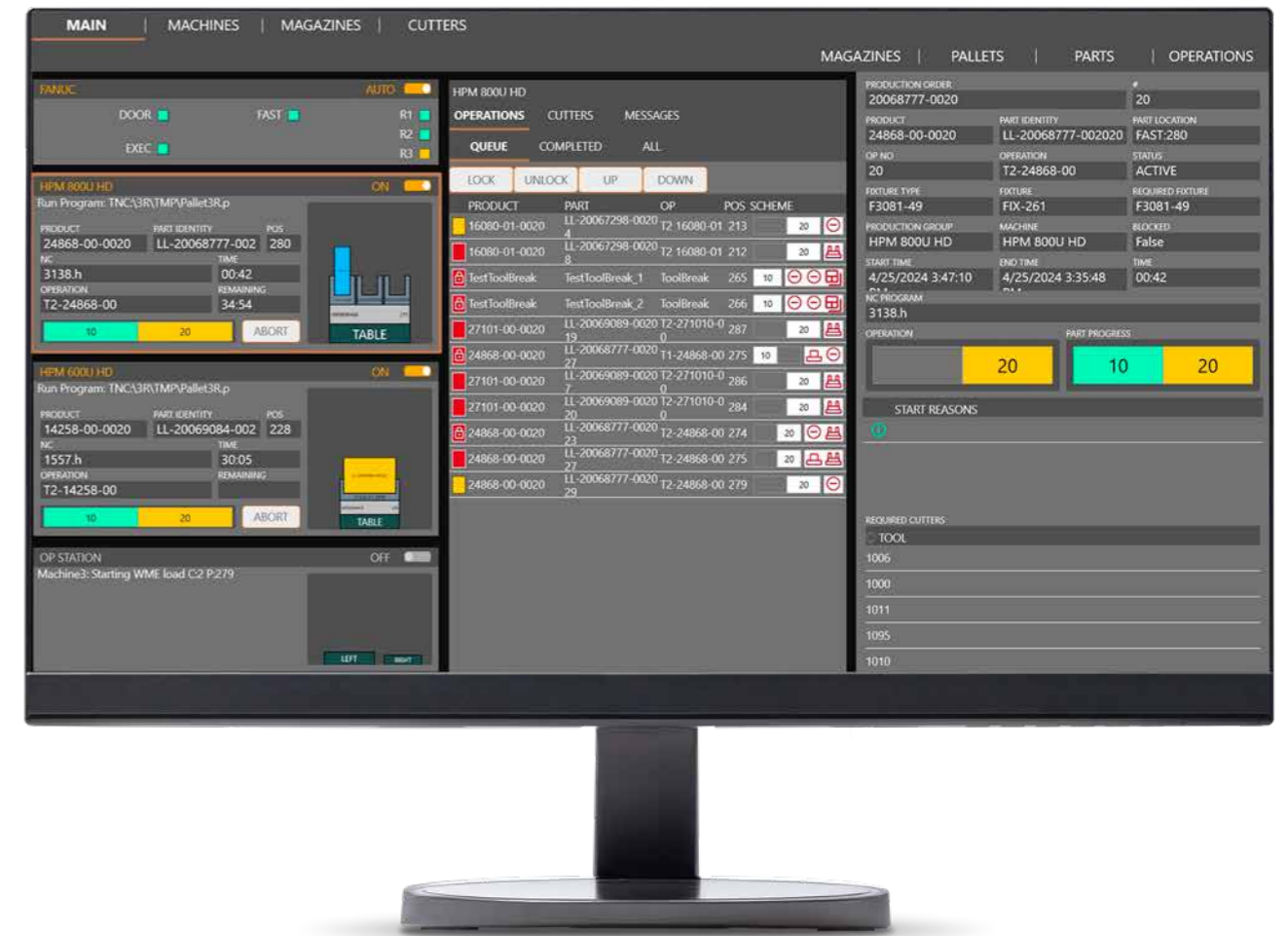




## WSM 5 – WorkShopManager 5

# User-friendly Cell Management Software

- Necessary data is entered quickly and in a structured manner.
- Quick, precise overview of the entire process chain
- Increased flexibility: The order of priority can be changed at any time.
- Simpler, safer preparation of automated cells
- The risk of errors due to the human factor is minimized.
- Increased process security



### Preparation – WorkCenter

- Create an order
- Assign operations and NC programs
- Retrieve offset values
- Release the order for production

### Execution – CellManager

- Manages the pallet ID codes and magazine positions
- Creates priority lists
- Automatically starts available jobs in the order of the priority list
- Updates the information in the database with the status and machining times of individual orders

### Monitoring – CellMonitor

- Display status of all cells
- Display status of individual machines and processes

### Statistics – WSM 5 Statistics

- Retrieve and analyze cell utilization data
- Retrieve and analyze order data



## At a glance

We enable our customers to run their businesses efficiently and effectively by offering innovative Milling, EDM, Laser, Additive Manufacturing, Spindle, Tooling and Automation solutions. A comprehensive package of services completes our proposition.

[www.gfms.com](http://www.gfms.com)

