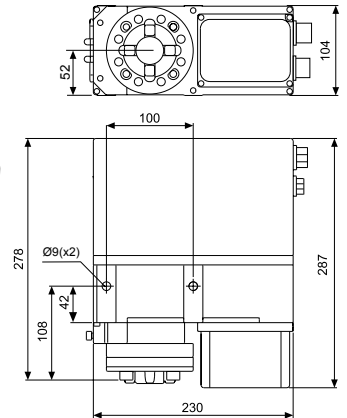


B-axis, Rotating spindles & Rotary table

B-axis, Macro

Compact Rotary Indexing Tables with pneumatic Macro chuck. Indexing 0-360° with smallest step 0.001°. Air connections for open/close, as well as turbo-locking/air-blast cleaning.

- Required drawbar 3R-605.1RS
- Indexing accuracy $\pm 0.003^\circ$ without correction
- Speed range 0-10 rev/min
- Automatic air-blast cleaning of the Z-references
- Weight 18 kg.



Machine-adapted B-axis, 3R-60.360X

Note: The units are controlled by the machine. The mark and type of the machine must therefore be stated when ordering.

Neutral B-axis, 3R-60.360SA

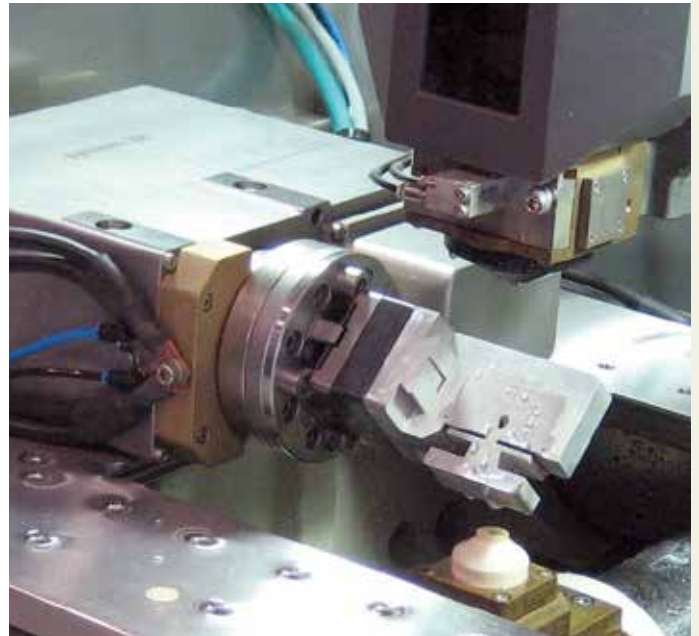
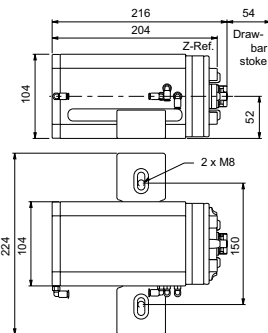
Supplied with a separate control unit.

Spare part kit brushes, 3R-SSP100 (same for all B-axis).

Automatic indexing chuck, Macro, D-30206

Pneumatic built-in chucks for Macro holders. Can also be used in milling and grinding operations without high cutting forces.

- Automatic index positions 4x90°
- Submergeable
- Clamps 3R-A239 included.
- Suitable control unit D-30206-01 (not included)
- Weight 14 kg.



B-axis, Rotating spindles & Rotary table

Really small parts that are difficult to produce in lathes or grinders can usefully be wire-EDMed using a rotating spindle on the machine table.

Rotating spindle, 3R-6.600-VHS

For clamping in a horizontal or vertical Macro chuck. Flushing via the spindle or an external flushing connection.

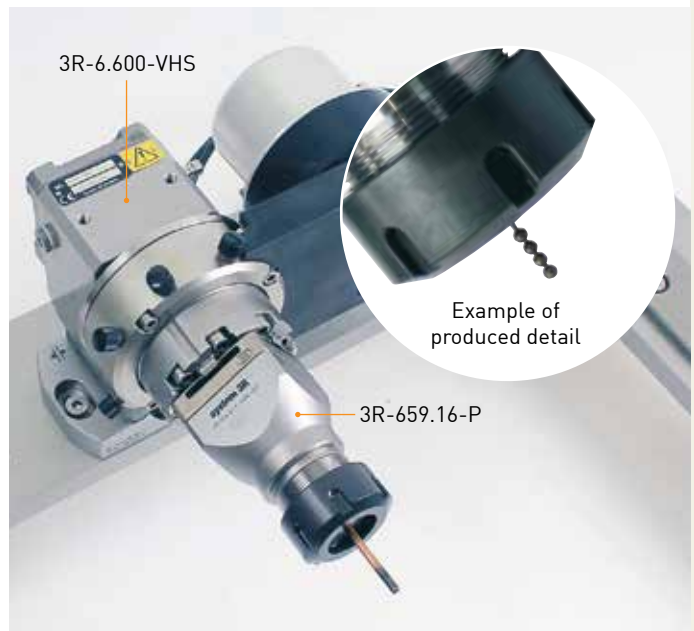
- Control unit included
- Required drawbar 3R-605.2RS
- Immersible
- Speed range 60-1500 rev/min
- Maximum workpiece weight 2 kg
- Maximum flushing pressure through the chuck 15 bar
- Maximum external flushing pressure 40 bar
- Weight 9.5 kg.



Rotating spindle, 3R-6.300-EHS16

For clamping in a vertical Macro chuck. Flushing via the spindle or an external flushing connection. Recommended collets – Balzer EHS16, Regofix ER16 or Tecnopinz ETS16.

- Control unit included
- Drawbar depends on chosen chuck
- Immersible
- Speed range 60-2000 rev/min
- Maximum flushing pressure through the chuck 15 bar
- Maximum external flushing pressure 80 bar
- Weight 10 kg.



Rotary table, Matrix 185, D-30229-3

Rotation table with Matrix 185 interface.

Note: The units are controlled by the machine. The mark and type of the machine must therefore be stated when ordering.

- Speed 8 rpm (variable 0-8 rpm)
- Maximum load 300 kg.
- Submersible, IP68
- Weight 77 kg.

